



AUSTRALIAN
EARTH
SCIENCE
EDUCATION

Plate Tectonics

Mars Bar Earth

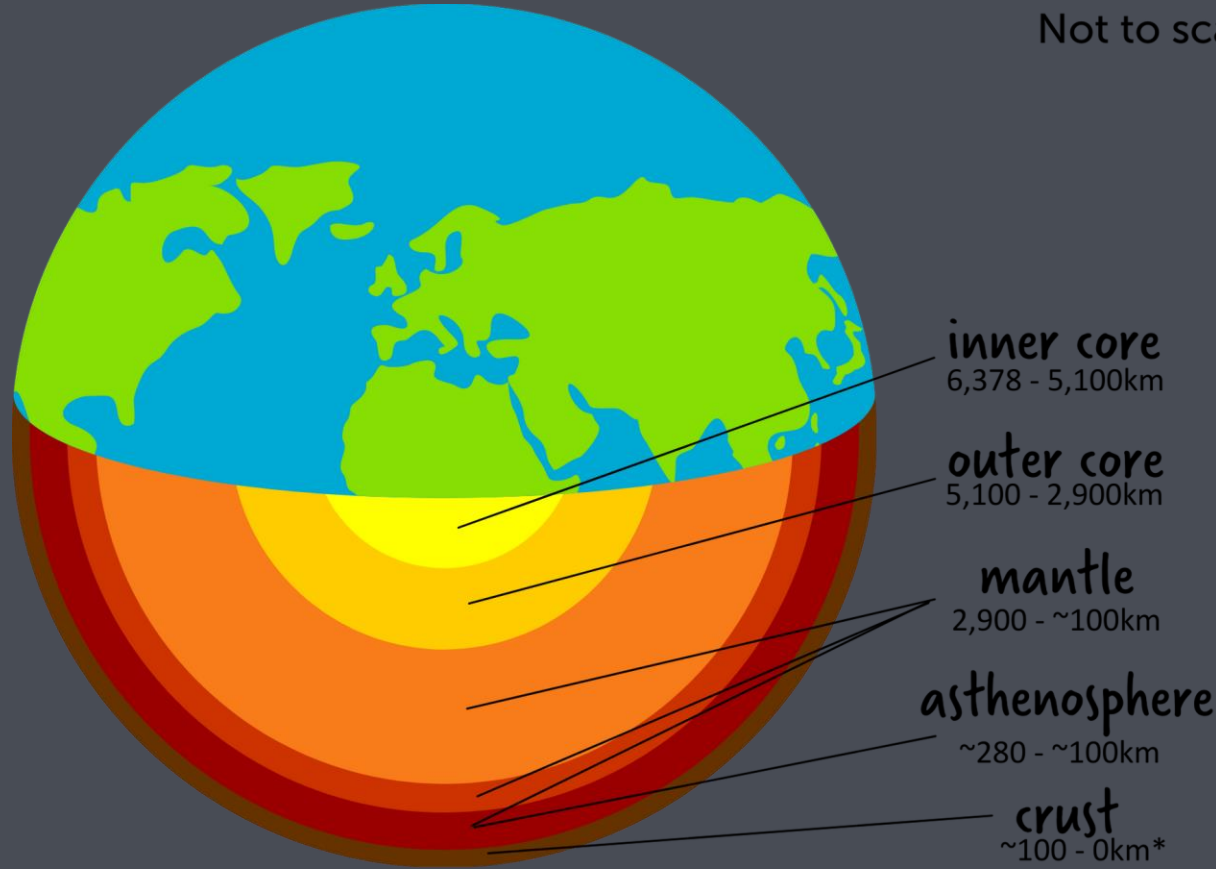
Resourced by



ausearthed.com.au

Label the parts of the Mars Bar to correspond to the layers of the Earth

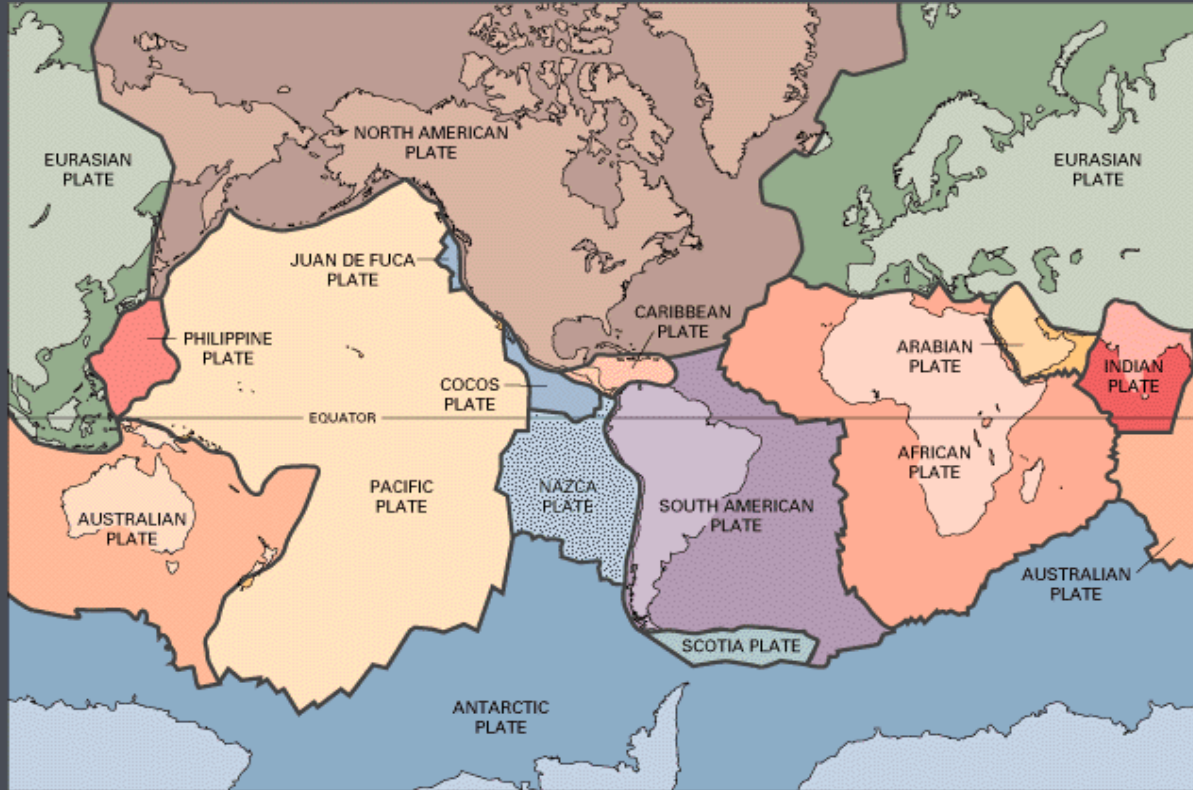
Not to scale



Earth's structure



Use your fingernail to make small cracks in the surface of your “Earth” (Mars Bar)

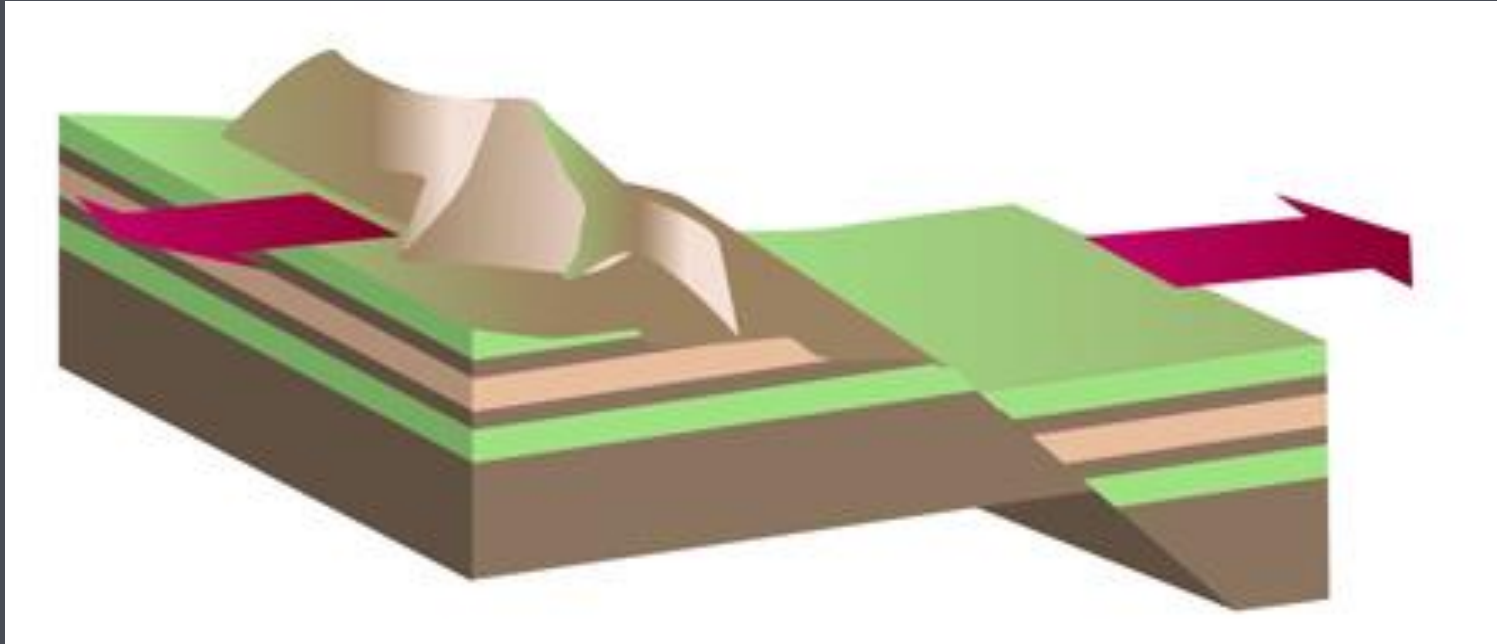


(USGS, 2011)

Tectonic plates



Pull the ends of the Mars Bar away from each other (don't let it tear completely)
What happens? List two things you observed.



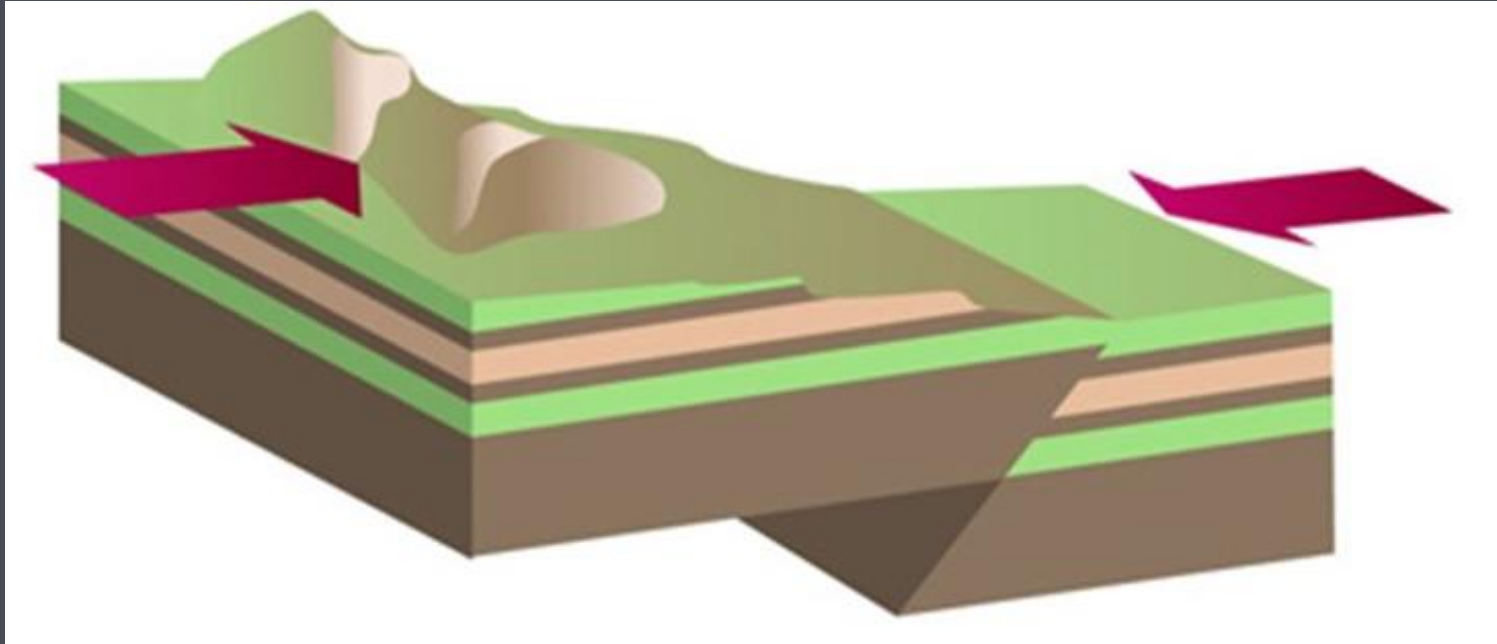
(Sparknotes LLC, 2011)

Stretching crust: normal faults



Push the ends of the Mars Bar towards each other

What happens? List two things you observed.

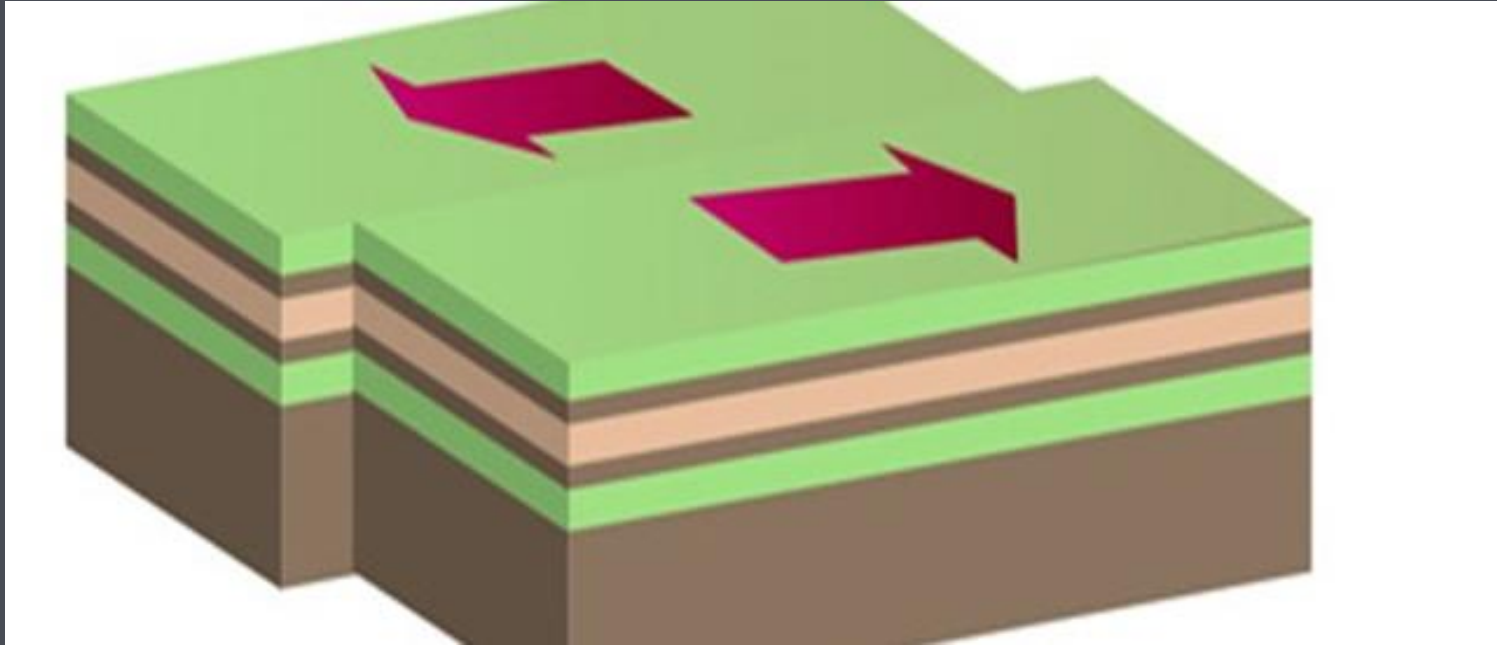


(Sparknotes LLC, 2011)

Compressing crust: reverse faults



Push the ends of the Mars Bar parallel to each other, in opposite directions
What happens? Why is this not a great example of strike-slip movement on Earth?



(Sparknotes LLC, 2011)

Sliding crust: strike-slip faults



References

Based on an activity from: The Science Spot, 2011, Havana, viewed August 2011, <http://sciencespot.net/index.html>

Earth's structure diagram: original picture licensed to ESWA through Canva, labels by ESWA using information from geology.com

Tectonic plates map: USGS, last modified 27/8/11, USA government, viewed August, 2011, <http://www.usgs.gov/default.asp>

Fault diagrams: Sparknotes LLC, 2011, viewed August, 2011, <http://sparkcharts.sparknotes.com>





**AUSTRALIAN
EARTH
SCIENCE
EDUCATION**

ausearthed.com.au

Resourced by

